

# Pro Components

## CTP-D15 SERIES PRINTED CIRCUIT TEST POINTS

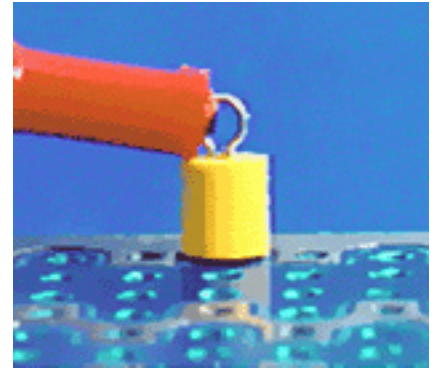
### SPECIFICATIONS:

Material: 0.254mm x 0.508mm(0.010" x 0.020") Diameter.  
Phosphor Bronze #510 Alloy.

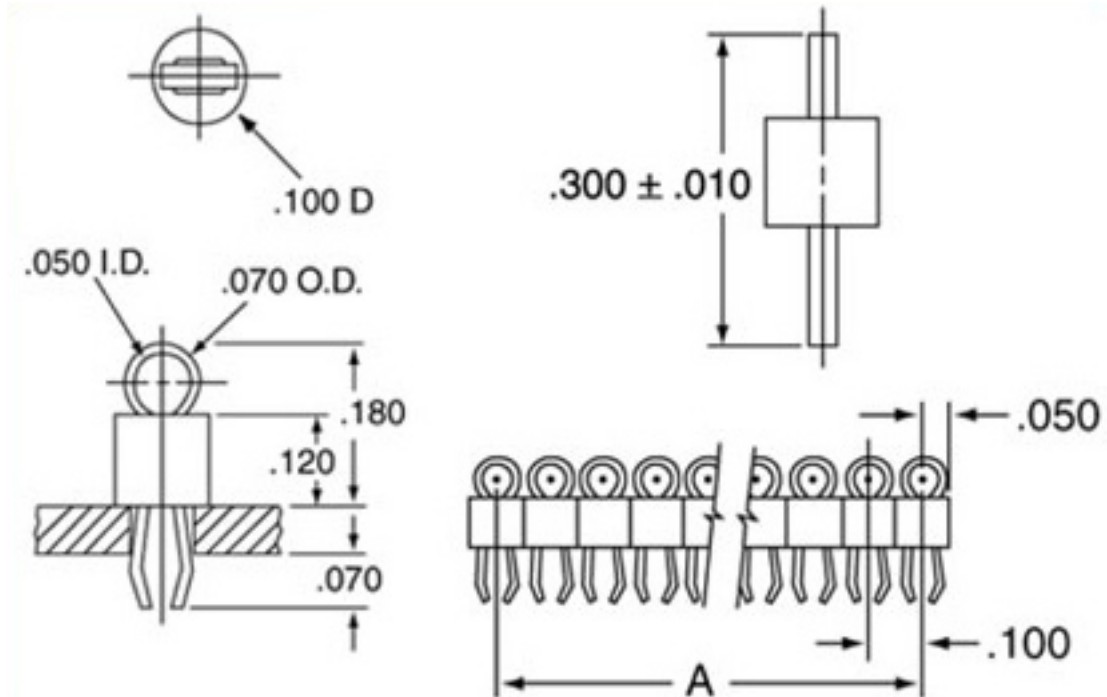
Finish: Bright, Electro-Tin.

Mounting: 0.889mm x 1.067mm(0.035" to 0.042") Diameter Hole.

Collar: 30% Glass Filled Polyester.



### DIMENSIONS:(UNITS: INCHES)



# Pro Components

## CTP-D15 SERIES PRINTED CIRCUIT TEST POINTS

### DIMENSIONS:

| Part Number | Dimension "A"     | Part Number | Dimension "A"     |
|-------------|-------------------|-------------|-------------------|
| CTP-D15-01  | N/A               | CTP-D15-21  | 50.800mm (2.000") |
| CTP-D15-02  | 2.540mm (0.100")  | CTP-D15-22  | 53.340mm (2.100") |
| CTP-D15-03  | 5.080mm (0.200")  | CTP-D15-23  | 55.880mm (2.200") |
| CTP-D15-04  | 7.620mm (0.300")  | CTP-D15-24  | 58.420mm (2.300") |
| CTP-D15-05  | 10.160mm (0.400") | CTP-D15-25  | 60.960mm (2.400") |
| CTP-D15-06  | 12.700mm (0.500") | CTP-D15-26  | 63.500mm (2.500") |
| CTP-D15-07  | 15.240mm (0.600") | CTP-D15-27  | 66.040mm (2.600") |
| CTP-D15-08  | 17.780mm (0.700") | CTP-D15-28  | 68.580mm (2.700") |
| CTP-D15-09  | 20.320mm (0.800") | CTP-D15-29  | 71.120mm (2.800") |
| CTP-D15-10  | 22.860mm (0.900") | CTP-D15-30  | 73.660mm (2.900") |
| CTP-D15-11  | 25.400mm (1.000") | CTP-D15-31  | 76.200mm (3.000") |
| CTP-D15-12  | 27.940mm (1.100") | CTP-D15-32  | 78.740mm (3.100") |
| CTP-D15-13  | 30.480mm (1.200") | CTP-D15-33  | 81.280mm (3.200") |
| CTP-D15-14  | 33.020mm (1.300") | CTP-D15-34  | 83.820mm (3.300") |
| CTP-D15-15  | 35.560mm (1.400") | CTP-D15-35  | 86.360mm (3.400") |
| CTP-D15-16  | 38.100mm (1.500") | CTP-D15-36  | 88.900mm (3.500") |
| CTP-D15-17  | 40.640mm (1.600") | CTP-D15-37  | 91.440mm (3.600") |
| CTP-D15-18  | 43.180mm (1.700") | CTP-D15-38  | 93.980mm (3.700") |
| CTP-D15-19  | 45.720mm (1.800") | CTP-D15-39  | 96.520mm (3.800") |
| CTP-D15-20  | 48.260mm (1.900") | CTP-D15-40  | 99.060mm (3.900") |

### PART NUMBER:

